

HT5000UV SPECIFICATIONS

Model	HT5000UV	
Printhead	Kyocera KJ4A	
Quantity of printheads	4-12 pcs(Double rows)	
Resolution	363*3600dpi	
Print speed	Draft	192m ² /h
	Production	140m ² /h
	Quality	95 m ² /h
Max print width	5.0m	
Max media thickness	2mm	
Media type	Roll materials	
Ink	Flexible UV ink	
Ink color	C、M、Y、K、Lc、Lm、W	
Machine size(L*W*H)	8.88*2.03*2.02M	
Machine net weight	6300KG	
Machine gross weight	8170KG	
Power consumption	11.1KW(25A)	
Power supply	400VAC. 50Hz 3P/N/PE	
RIP support	Caldera	
UV Curing	LED	
Interface	High Speed PCIE	
Environment	Seperated workroom in good cleaning and ventilated condition, avoid direct sunlight Temperature: 18° C – 30° C(64°F-86°F) Constant Humidity: 30%-70%	



HT5000UV

Create value for customers; be a world-leading manufacturer of smart digital printing equipment

- Diversified product configuration and application solution can match the different demand in advertising, decorating and other industries.
- Reliable stability combines the outstanding printing quality and speed performance.
- Top-level R&D team ensures prompt optimization and upgrade for new products and keep advanced technology in digital printing field.
- Strong worldwide after-sales service team quickly shoots your problem.
- High cost-value product brings you more business.

©Above information for reference only and subject to change without notice. Shenzhen Handtop Tech Co.,Ltd all rights reserved.



Shenzhen HANDTOP Tech Co.,Ltd

Add:The Third Factory, NO.322 Yuanhu Road, Longgang District Shenzhen China.
Tel: +86 0755-2796 0460 E-mail: info-handtop@hanglorygroup.com
Fax: +86 0755-2321 7841 http://www.handtopuv.com

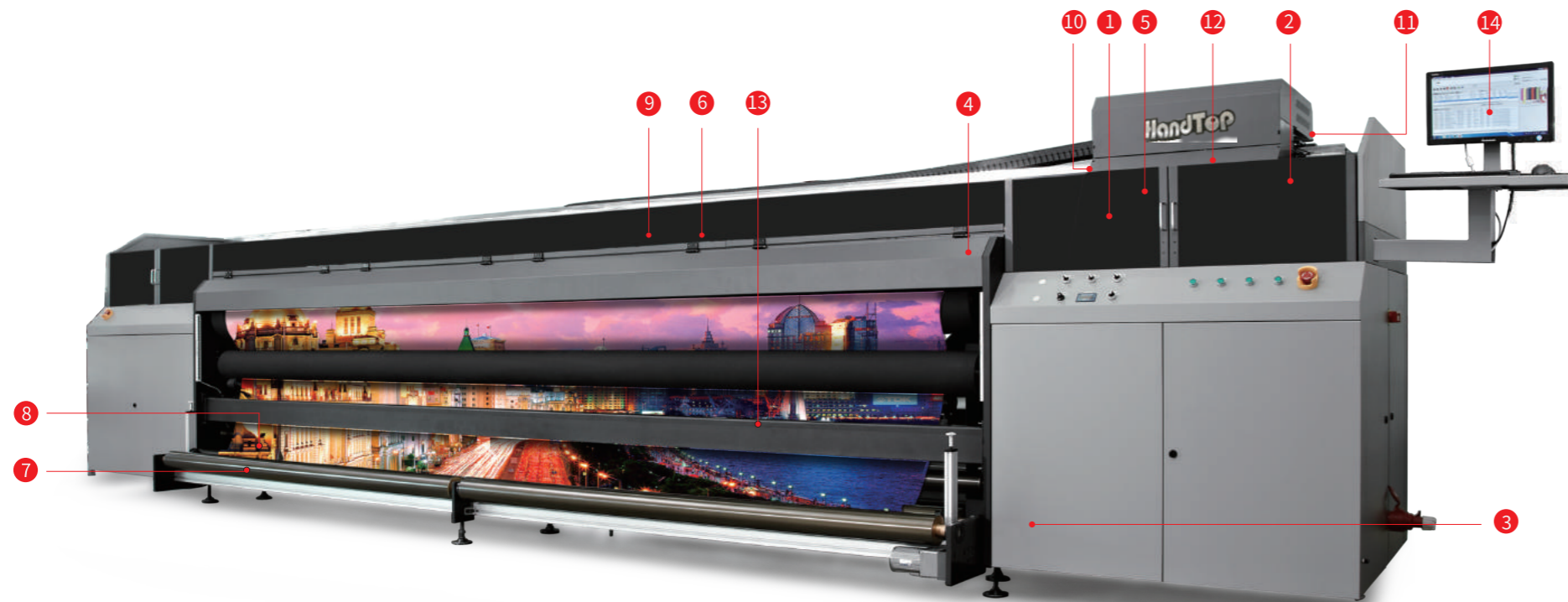


HandTOP



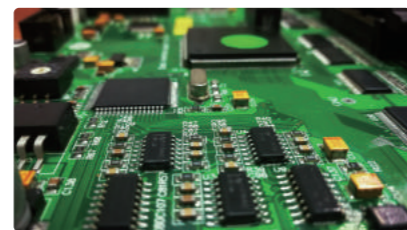
HT5000UV Roll to Roll Printer

5m width MEDIA AREA

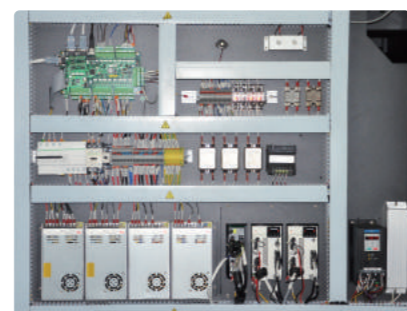


- 9** Multiple air cylinder supporter pinch roller
Pinch roller with 8 air cylinder supporter which allow divided adjustment to ensure media transportation.
- 10** Water-cooling printing platform with adjustable suction zone
Suitable for heat sensitive medias, make sure the media won't get distorted during the printing process and get better performance.
- 11** Auto height detection system, range of 0-30mm
Automatically detects the height of media up to 30mm thickness and calibrates printhead distance for variable dot placement.
- 12** Water-cooling LED lamp
Good curing performance with lower operating temperature and environment-friendly water-cooling LED system.
- 13** Top printing speed: up to 192m²/hr
Being engineered for high-quality printing and outputs up to 192m²/hr with full blood capacity.
- 14** High-precision imported reducer
With High-precision reducer at Y axis to increase the stepping accuracy for better high-end printing quality.
- 15** Automatic solenoid valve control of ink system
The ink valve system is opened and closed automatically by solenoid valve control.

- 1** Auto media width detection system
Automatically detects the width of media, flexible to print different size of media.
- 2** Static suppression(optional)
Optional static suppression kit that eliminates static on the substrate.
- 3** Automatic negative pressure system
Using PCB board to control negative pressure, set the negative pressure data from software.
- 4** Linear motor and metal raster
High-tech linear motor gives more stable carriage movement, metal raster ensures the high precision in X direction movement.
- 5** Kyocera print heads(one head with 2 colors)
Variable dots, true grey-scale imaging 4, 6 and 10pl
- 6** On board control module
Rich functions, self-developed software, independent control module, efficient and convenient.
- 7** Function for mesh printing
Special design with mesh kit, optional for the customers to print mesh material.
- 8** Double rollers feeding system
Efficient and convenient system for loading the media.



Self-developed, customized driver and PCB board



Industrialized wiring make it more artistic

Kyocera KJ4A Printhead

Nozzle quantity : 2656
Physical Resolution : 2*300dpi
Pico-liter : Variable 4-6-10pl
Max Operating Frequency : 30Khz
Effective Print Width : 112.35mm

