

SPECIFICATIONS

Model	HT3200UV
Printhead	Kyocera KJ4A
Quantity of printheads	4-10 pcs(Double rows)
Resolution	360*3600dpi
Draft	142m ² /h
Print speed	Production 105m ² /h
	Quality 80m ² /h
Max print width	3.2m
Max media thickness	50mm
Media type	Rigid and flexible flat materials
Ink	Environmental friendly UV/LED curable ink(VOC free)
Ink color	C、 M、 Y、 K、 W
Machine size(L*W*H)	5.62*1.45*1.8 m
Machine net weight	2460KG
Machine gross weight	3330KG
Power consumption	9.0 KW(20A)
Power supply	400VAC. 50Hz 3P/N/PE
RIP support	Caldera
UV Curing	LED
Interface	High Speed PCIE
Environment	Seperated workroom in good cleaning and ventilated condition, avoid direct sunlight Temperature: 18° C – 30° C(64°F-86°F) Constant Humidity: 30%-70%



HT3200UV

Create value for customers; be a world-leading manufacturer of smart digital printing equipment.

- Diversified product configuration and application solution can match the different demand in advertising, decorating, glass and other industries.
- Reliable stability combines the outstanding printing quality and speed performance.
- Top-level R&D team ensures prompt optimization and upgrade for new products and keep advanced technology in digital printing field.
- Strong worldwide after-sales service team quickly shoots your problem.
- High cost-value product brings you more business.

©Above information for reference only and subject to change without notice. Shenzhen Handtop Tech Co.,Ltd all rights reserved.



Shenzhen HANDTOP Tech Co.,Ltd

Add:The Third Factory, NO.322 Yuanhu Road, Longgang District Shenzhen China.
Tel: +86 0755-2796 0460 E-mail: info-handtop@hanglorygroup.com
Fax: +86 0755-2321 7841 http://www.hanglorygroup.com

HT3200UV Hybrid Printer



HT 3200UV Hybrid

3.2m width MEDIA AREA



Kyocera KJ4A Printhead

Nozzle quality : 2656

Physical Resolution : 2*300dpi

Pico-litter : Variable 4-6-10pl

Max Operating Frequency : 30Khz

Effective Print Width : 112.35mm



- **Retractable Alignment Bar**
Retractable alignment bar allows accurate and consistent media placement.
- **Static suppression(optional)**
Optional static suppression kit that eliminates static on the substrate.
- **Emergency Stop Switches**
Stop operation from any corner when the printer is in emergency.
- **On Board Control Module**
Rich functions, self-developed software, independent control module, efficient and convenient.
- **Auto Belt Correction System**
Auto belt correction system will detect the moving of belt, if the shifting is detected, the system will automatically adjust the moving of belt to the right way.

High-Speed Double Row Linear Motor Application

Top level UV printing quality and productivity from Handtop

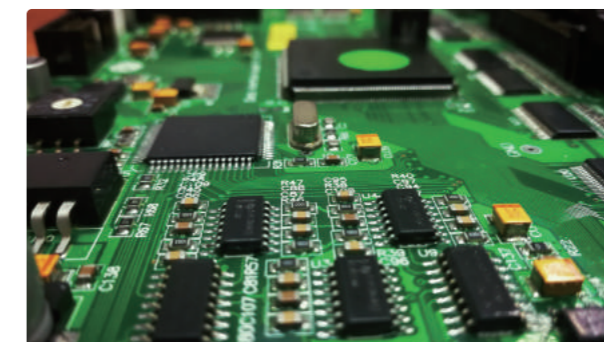
Kyocera print head is known as a type of print head with high precision, fast speed and strong stability all across the print head industry. The perfect combination with Handtop printers as well as a second upgrade of double row linear motor application, once again elevates the performance of Kyocera print head to a new era, bringing the miracle of high precision super fast printing to advertising industry.



carriage head

- Realize high-quality printing of 105m²/h with 6 pass
- Realize 142m²/h high productivity printing with 4 pass

- **Automatic negative pressure system**
Using PCB board to control negative pressure, setting the negative pressure data from software.
- **Kyocera Print Heads(one head with 2 colors)**
Featuring variable dots, true grayscale imaging 4, 6, and 10pl .
- **LED**
Instant curing of UV ink for fast production. Flexible to be controlled during printing.
- **Auto Height Detection System**
Automatically detects the height of media up to 50mm thickness and calibrates print head distance for variable dot placement and image quality.
- **The tension adjust device**
The tension adjust device for the roller added,this device will help to prevent the feeding wrinkle.



Self-developed, customized driver and PCB board



Industrialized wiring makes it more artistic