

SPECIFICATIONS

Model	HT1600UV	HT2500UV	HT3200UV	
Printhead	Kyocera KJ4A	Kyocera KJ4A	Kyocera KJ4A	
Quantity of printheads	2-4 pcs (Single row)	3-4 pcs (Single row)	4-8 pcs (Double rows)	
Resolution	1200*1200dpi			
Print speed	Draft	36m ² /h	55m ² /h	104m ² /h
	Production	27m ² /h	38m ² /h	75m ² /h
	Quality	20m ² /h	26m ² /h	53m ² /h
Print mode	Unidirectional and bidirectional			
Max width	1.6m	2.5m	3.2m	
Max media thickness	50mm			
Media type	Rigid and flexible flat materials			
Ink	Environmental friendly UV/LED curable ink(VOC free)			
Ink color	C、M、Y、K、Lc、Lm、W (varnish is optional when there is no Lc and Lm)	C、M、Y、K、Lc、Lm、V、W		
Image format	Adobe Postscript Level3、PDF、JPEG、TIFF、EPS、AI			
Machine size(L*W*H)	4.15*1.19*1.33m	5.49*1.15*1.38m	6.19*1.59*1.56m	
Machine net weight	760KG	1280KG	2260KG	
Machine gross weight	1170KG	1875KG	3130KG	
Power consumption	5.3KW(27A)	8.0KW(20A)	9.0KW(20A)	
Power supply	230VAC. 50Hz L/N/PE	400VAC. 50Hz 3P/N/PE		
Certification	CE / FCC			
RIP support	Caldera, Onyx			
UV Curing	Mercury vapor UV lamps, LED(optional)			
Interface	High Speed PCIE			
Environment	Seperated workroom in good cleaning and ventilated condition, avoid direct sunlight			
	Temperature: 18° C – 30° C(64°F-86°F)			
	Constant Humidity: 30%-70%			

©Above information for reference only and subject to change without notice. Shenzhen Handtop Tech Co.,Ltd all rights reserved.



Create value for customers; be a world-leading manufacturer of smart digital printing equipment.

- Diversified product configuration and application solution can match the different demand in advertising, decorating, glass and other industries.
- Reliable stability combines the outstanding printing quality and speed performance.
- Top-level R&D team ensures prompt optimization and upgrade for new products and keep advanced technology in digital printing field.
- Strong worldwide after-sales service team quickly shoots your problem.
- High cost-value product brings you more business.



Shenzhen HANDTOP Tech Co.,Ltd

Add: The Third Factory, NO.322 Yuanhu Road, Longgang District Shenzhen China.
Tel: +86 0755-2796 0460 E-mail: info-handtop@hanglorygroup.com
Fax: +86 0755-2321 7841 http://www.handtopuv.com



HandTop



HT3200UV/HT2500UV/HT1600UV Hybrid Printer

HT3200UV Hybrid

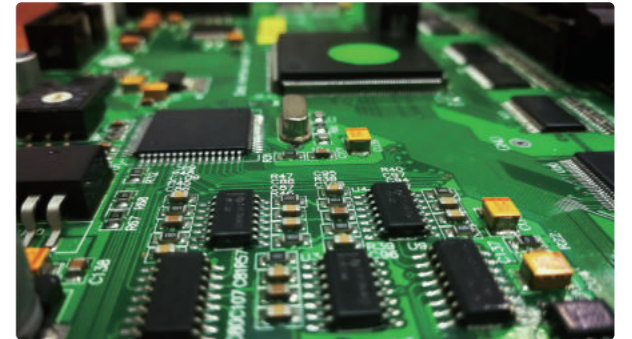
3.2m width MEDIA AREA

HT1600UV Hybrid

1.6m width MEDIA AREA

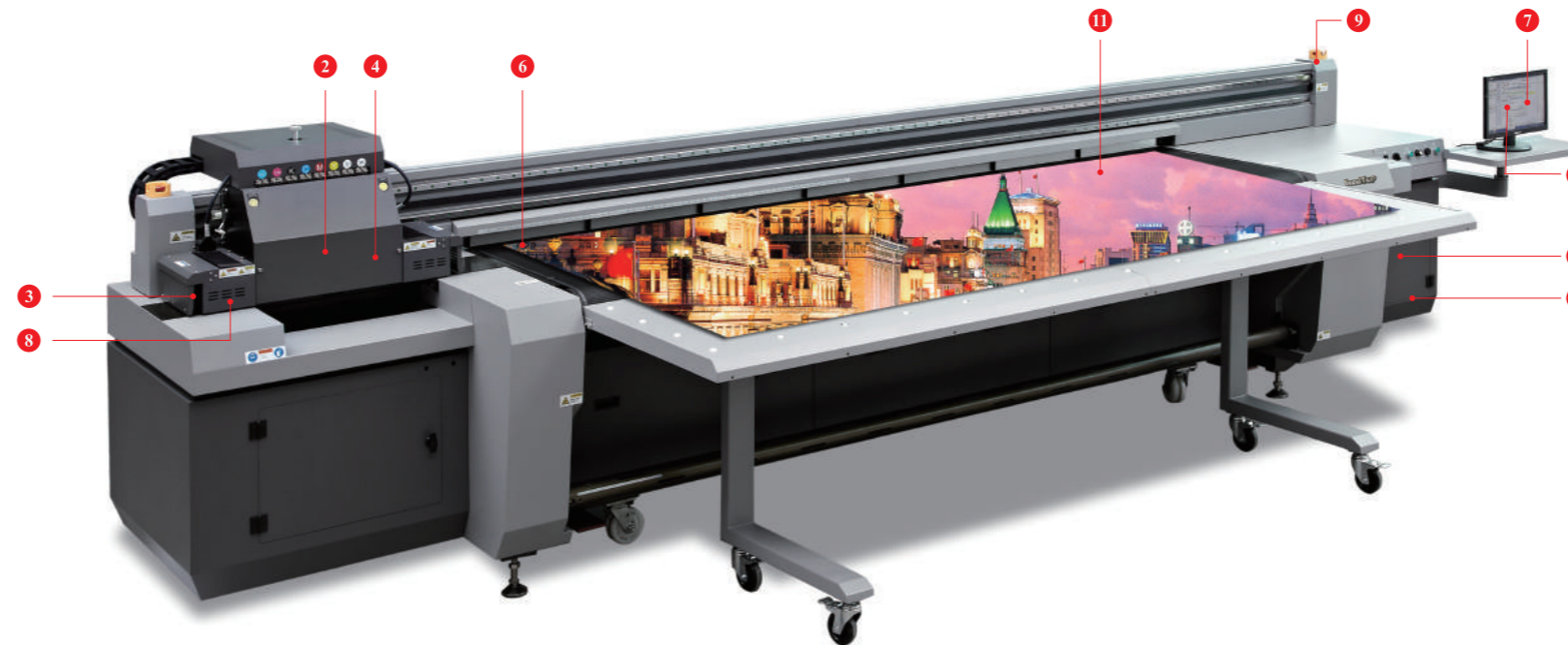
HT2500UV Hybrid

2.5m width MEDIA AREA



Self-developed, customized driver and PCB board

- 1 Automatic negative pressure system**
Using PCB board to control negative pressure, setting the negative pressure data from software.
- 2 Kyocera Print Heads(one head with 2 colors)**
Featuring variable dots, true grayscale imaging 4, 6, and 10pl.
- 3 UV-curing Lamps/LED(optional)**
Instant curing of UV ink for fast production. Flexible to be controlled during printing.
- 4 Auto Height Detection System**
Automatically detects the height of media up to 50mm thickness and calibrates print head distance for variable dot placement and image quality.
- 5 The tension adjust device(only for HT3200)**
The tension adjust device for the roller added,this device will help to prevent the feeding wrinkle.
- 6 Retractable Alignment Bar**
Retractable alignment bar allows accurate and consistent media placement.
- 7 Top Printing Speed: Up to 110m²/hr (HT3200)**
Engineered for high-quality printing and outputs up to 110m²/hr with full-blood capacity.(HT3200 kyocera with double rows)



Industrialized wiring makes it more artistic

- 8 Static suppression(optional)**
Optional static suppression kit that eliminates static on the substrate.
- 9 Emergency Stop Switches**
Stop operation from any corner when the printer is in emergency.
- 10 On Board Control Module**
Rich functions, self-developed software, independent control module, efficient and convenient.
- 11 Auto Belt Correction System(HT2500.HT3200)**
Auto belt correction system will detect the moving of belt, if the shifting is detected, the system will automatically adjust the moving of belt to the right way.

Kyocera KJ4A Printhead

Nozzle quality : 2656
Physical Resolution : 2*300dpi
Pico-litter : Variable 4-6-10pl
Max Operating Frequency : 30Khz
Effective Print Width : 112.35mm

