

## Technical specifications

Model	HT1610UV		HT2512UV		HT3116UV		HT3020UV		
Printhead	RicohG5	RicohG6	RicohG5	RicohG6	RicohG5	RicohG6	RicohG5	RicohG6	
Quantity of printhead	2-4pcs (Single row)	2-4pcs (Single row)	4-8pcs (Double rows)	4-8pcs (Double rows)	4-8pcs (Double rows)	4-8pcs (Double rows)	4-8pcs (Double rows)	4-8pcs (Double rows)	
Resolution	1200*1200dpi								
Print speed	Draft	20m <sup>2</sup> /h	27m <sup>2</sup> /h	42m <sup>2</sup> /h	60m <sup>2</sup> /h	50m <sup>2</sup> /h	68m <sup>2</sup> /h	54m <sup>2</sup> /h	70m <sup>2</sup> /h
	Production	13m <sup>2</sup> /h	20m <sup>2</sup> /h	30m <sup>2</sup> /h	45m <sup>2</sup> /h	36m <sup>2</sup> /h	46m <sup>2</sup> /h	38m <sup>2</sup> /h	46m <sup>2</sup> /h
	Quality	10m <sup>2</sup> /h	15m <sup>2</sup> /h	21m <sup>2</sup> /h	32m <sup>2</sup> /h	23m <sup>2</sup> /h	36m <sup>2</sup> /h	27m <sup>2</sup> /h	37m <sup>2</sup> /h
Print mode	Unidirectional & Bidirectional								
Max print width	1.6m*1.0m		2.5m*1.2m		3.0m*1.5m		3.0m*2.0m		
Max media thickness	100mm								
Media type	Phone cases, glass, acrylic, planks, tiles, metal plates, PVC boards, corrugated boards, plastics, marble, wallpaper, light box fabrics, PC, ABS, 3C etc.								
Ink	Environmental friendly UV/LED curable ink(VOC free)								
Ink color	C, M, Y, K, Lc, Lm, W (varnish is optional when there is no Lc and Lm)		C, M, Y, K, Lc, Lm, W, V						
Image format	Adobe Postscript Level3, PDF, JPEG, TIFF, EPS, AI								
Machine size(L*W*H)	3.44m*2.21m*1.28m		4.67m*2.51m*1.38m		5.22m*2.71m*1.38m		5.22m*3.24m*1.38m		
Machine net weight	570KG		1150KG		1450KG		1520KG		
Machine gross weight	990KG		1745KG		2160KG		2330KG		
Power consumption	5.3KW(27A)		8.3KW(20A)						
Power supply	230VAC.50HZ L/N/PE		400VAC.50Hz 3P/N/PE						
Certification	CE, FCC								
RIP support	Caldera								
UV curing	Mercury vapor UV lamps, LED(optional)								
Interface	High Speed PCIE								
Environment	Seperated workroom in good cleaning and ventilated condition, avoid direct sunlight Temperature: 18°C-30°C (64°F -86°F) Constant Humidity: 30%- 70%								

©Above information for reference only and subject to change without notice. Shenzhen Handtop Tech Co.,Ltd all rights reserved.

HANGLORY GROUP | **HandTOP**



# UV Flatbed Printer Industrial-grade High-precision Printhead Series

**Create value for customers; be a world-leading manufacturer of smart digital printing equipment.**

- Diversified product configuration and application solution can match the different demand in advertising, signs, exquisite gifts, phone cases, furniture, building materials, decoration and other industries.
- Reliable stability combines the outstanding printing quality and speed performance.
- Top-level R&D team ensures prompt optimization and upgrade for new products and keep advanced technology in digital printing field.
- Strong worldwide after-sales service team quickly shoots your problem.
- High cost-value product brings you more business.



**Shenzhen HANDTOP Tech Co.,Ltd**

Add: The Third Factory, NO.322 Yuanhu Road, Longgang District Shenzhen China.  
Tel: +86 0755-2796 0460 E-mail: info-handtop@hanglorygroup.com  
Fax: +86 0755-2321 7841 http://www.hanglorygroup.com



**HandTOP**



# HT3116UV/HT3020UV/HT2512UV/HT1610UV UV Flatbed Printer

## HT3116UV

Print size: 3.1\*1.6m

## HT3020UV

Print size: 3.05\*2.05m

## HT2512UV

Print size: 2.5\*1.22m

## HT1610UV

Print size: 1.6\*1.0m

- 1 Automatic Negative Pressure System**  
Using PCB board to control negative pressure, setting the negative pressure data from software.
- 2 RicohG5 Printhead**  
Featuring variable dots, true grayscale imaging 7, 14, and 21pl.
- 3 RicohG6 Printhead**  
Featuring variable dots, true grayscale imaging 5, 10, and 15pl.
- 3 UV-curing Lamps/LED(optional)**  
Instant curing of UV ink for fast production. Flexible to be controlled during printing.
- 4 Auto Height Detection System**  
Automatically detects the height of media up to 100mm thickness and calibrates print head distance for variable dot placement and image quality.
- 5 Emergency Stop Switches**  
Stop operation from any corner when the printer is in emergency.
- 6 Controllable Suction Area**  
Adjusted according to the actual situation, and supports two-way adjustment of suction and blowing.
- 7 Static Suppression(optional)**  
Optional static suppression kit that eliminates static on the substrate.



carriage head

- 8 Integrated Software Functions**  
Allow users to adjust all functions in the software, and print on one side of rip to improve efficiency.
- 9 High Quality Original Imported Accessories**  
Accessories are purchased from top global suppliers such as Japan, Germany and Italy.
- 10 Top Printing Speed: Up to 70m<sup>2</sup>/hr(HT3020 RicohG5 Double-row)**  
Engineered for high-quality printing and outputs up to 70m<sup>2</sup>/hr with full-blood capacity.



RIP Software



Noiseless, powerful suction platform

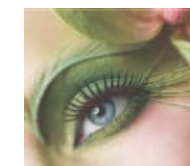
### Ricoh Gen5 Printhead

Nozzle Quantity : 1280  
Physical Resolution : 600dpi  
Pico-litter : Variable 7-14-21pl  
Max Operating Frequency : 30kHz  
Effective Print Width : 54.1mm

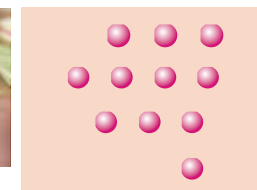


### Ricoh Gen6 Printhead

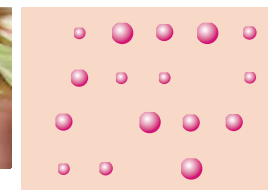
Nozzle Quantity : 1280  
Physical Resolution : 600dpi  
Pico-litter : Variable 5-10-15pl  
Max Operating Frequency : 50kHz  
Effective Print Width : 54.1mm



Invariable dot



Variable dot



### Grayscale Inkjet Technology

Grayscale printing not only saves the cost of ink but also makes the image more delicate, the color brighter. Thus it improves the performance of the pictures and makes them more impressive.